

Ultra Series

MODELS 1200/1350 TELESCOPIC
BOOM LIFTS



*The Power To Go Where
Others Can't*



*The Power To Be Both
Large and Compact*



*The Power To Manoeuvre
With Precision Accuracy*

**1200SJP
1350SJP**



JLG

Stronger. Taller. More Powerful.

JLG's revolutionary new Ultra Series Telescopic Boom Lifts are engineered with the strength, power and extended reach to take operators to greater heights—with features that put these boom lifts in a class of their own.

With a comprehensive reach of 41.15 m (135 ft.) and a capacity of 450 kg (1,000 lbs.) in the majority of the work envelope, the JLG Model 1350SJP Telescopic Boom Lift goes higher than any other telescopic boom lift in history.

The Ultra Series power arms are built from 100,000 psi steel, making them 40% stronger than the competition and the most robust in the industry. This boom strength allows JLG to offer revolutionary productivity packages that increase operator productivity, comfort and ease of operation.

Unmatched Range of Motion and Reach

With their exclusive controlled arc, Ultra Series Boom Lifts automatically maintain a smooth arc at the edges of the work envelope by controlling the boom extension through the lift function. The JibPLUS® boom feature allows the operator to use the platform to literally reach around corners.* And, with the Capacity Control system, operators can automatically limit the work envelope to a pre-selected zone.

*Capacity is restricted to 230 kg. (500 lbs) when jib is in side-swing mode.

More Work with Less Effort

The Model 1200SJP reaches up to 50% more area than other 36.58 m (120 ft.) boom lifts, especially in the critical area beyond 15.24 m (50 ft.) of reach. It even outreaches the 38.10 m (125 ft.) class of boom lifts!

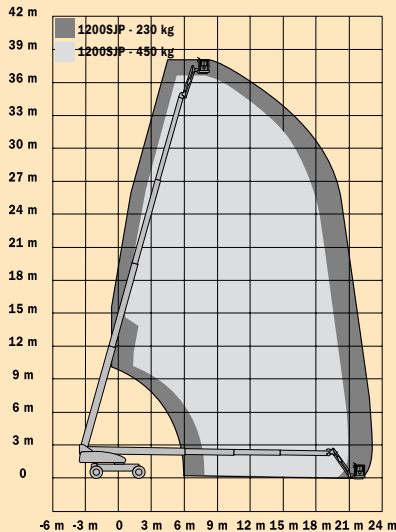
The Model 1350SJP creates a new class of telescopic boom lifts. With its unmatched work envelope and high capacities, the Model 1350SJP combines strength with revolutionary productivity-enhancing accessories without compromising reach at critical ranges!

Improved Performance and Operator Comfort

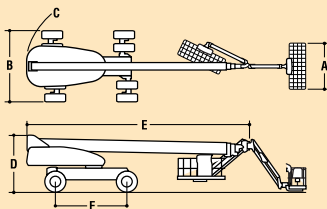
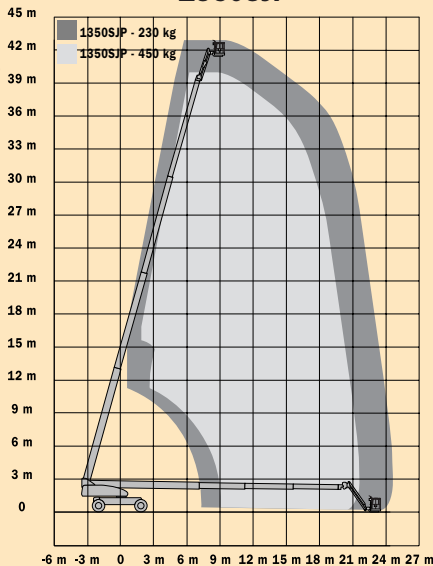
Designed with operator comfort in mind, every JLG Ultra Series Telescopic Boom Lift features a control system that adjusts the swing speed to the boom extension to maintain constant platform velocity. Steering speed is proportional to wheel angle to help reduce the jerky motion effect common on competitive boom lifts. Operators experience improved manoeuvrability when selecting from 3 steering modes: 2-wheel steer, 4-wheel co-ordinated, or the industry-best 1:1 ratio crab steering. Ease of operation is provided as the control system automatically synchronises the wheels when switching between steer modes.



1200SJP



1350SJP



Reach Specifications

Platform Height	36.58 m (120 ft.)	41.15 m (135 ft.)
Horizontal Reach	22.86 m. (75 ft.)	24.38 m (80 ft.)
Swing	360° Continuous	360° Continuous
Platform Capacity—Restricted	450 kg (1,000 lbs.)	450 kg (1,000 lbs.)
Platform Capacity—Unrestricted	230 kg (500 lbs.)	230 kg (500 lbs.)
Platform Rotator	180°	180°
JibPLUS®	Length	2.44 m (8 ft.)
	Horizontal Motion ¹	180°
	Vertical Motion	130° (+75°/-55°)

Dimensional Data

A. Platform Size	0.91 x 2.44 m (36 x 96 in.)	0.91 x 2.44 m (36 x 96 in.)
B. Overall Width	Axles Retracted	2.49 m (8 ft. 2 in.)
	Axles Extended	3.80 m (12 ft. 6 in.)
C. Tailswing	1.67 m (5 ft. 6 in.)	1.67 m (5 ft. 6 in.)
D. Stowed Height	3.05 m (10 ft.)	3.05 m (10 ft.)
E. Stowed Length	10.64 m (34 ft. 11 in.)	11.86 m (38 ft. 11 in.)
F. Wheelbase	3.81 m (12 ft. 6 in.)	3.81 m (12 ft. 6 in.)
Ground Clearance	0.30 m (12 in.)	0.30 m (12 in.)
Gross Vehicle Weight ²	18,650 kg (41,100 lbs.)	20,300 kg (44,750 lbs.)

Chassis

Max Ground Bearing Pressure	7.03 kg/cm ² (100 psi)	7.38 kg/cm ² (105 psi)
Drive Speed	5.2 km/h (3.25 mph)	5.2 km/h (3.25 mph)
Gradeability	45%	45%
Turning Radius (Inside)		
	Axles Retracted	4.39 m (14 ft. 5 in.)
	Axles Extended	2.44 m (8 ft.)
Turning Radius (Outside)		
	Axles Retracted	6.86 m (22 ft. 6 in.)
	Axles Extended	5.89 m (19 ft. 4 in.)
Crab Steer Ratio ³	1:1	1:1
Axle Oscillation	0.30 m (12 in.)	0.30 m (12 in.)
Tyres/Type	445/50D710 Foam Filled	445/50D710 Foam Filled

Power Source

Diesel Engine	Deutz BF4M 2011	65 kW (87 hp)	65 kW (87 hp)
Fuel Tank Capacity		117 L (31 gal.)	117 L (31 gal.)
Hydraulic Reservoir		208 L (55 gal.)	208 L (55 gal.)
Auxiliary Power		12V DC	12V DC

- Capacity is limited to 230 kg. (500 lbs) when JibPLUS® is extended horizontally.
- Certain options or country standards increase weight.
- Ratio of forward travel to lateral travel.

Standard Features

- Platform: 0.91 m x 2.44 m (36 in. x 96 in.)
- Selectable Capacity Envelope
- Drive-out Extending Axles
- Oscillating Axle
- Inward Swinging Gate
- 180° Hydraulic Platform Rotator
- AC Power in Platform
- 5 Degree Tilt Alarm/Indicator Light
- Swing-Out Engine Tray
- 12V DC Auxiliary Power
- Hourmeter
- Control ADE™ System
- Full-time 4WD

- Spark Arresting Muffler
- 3 Selectable Steering Modes
- Proportional Controls
- Gull-Wing Hoods
- Operators Tool Tray
- 445/50D710 Foam Filled Rim
- Protector Lug Tread Tyres
- Platform Console Machine Status Light Panel*
- Lifting/Tie Down Lugs
- Engine Distress Warning/Shutdown—Selectable via JLG Analyzer

*Provides indicator lights at platform control console for system distress, fuel level, low fuel, 5 degree tilt light and foot switch status.

Individual Options

- Platform: 0.91 m x 1.83 m (36 in. x 72 in.)
- Light Package¹
- Alarm Package²
- 12 mm (½ in.) Airline to Platform
- Soft-Touch System 1.83 m/2.44 m Platform (6 ft./8 ft.)
- 2500W Generator
- Catalytic Muffler
- Hostile Environment Kit³
- Platform Worklights
- All-Motion Alarm

- Includes platform mounted work lights and drive/backup lights.
- Includes all-motion alarm and flashing amber beacon.
- Includes console cover, boom wipers and cylinder bellows.

